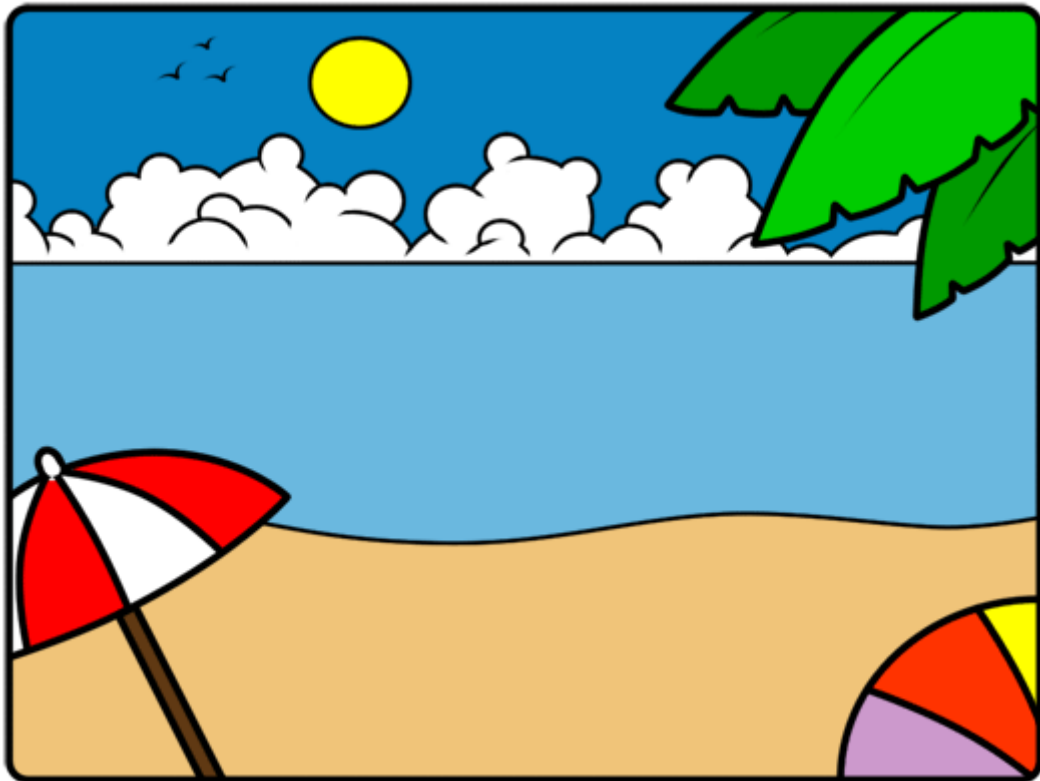


MEDITERRANEAN GARDEN

TEACHER'S NOTES



Teacher's Notes

Mediterranean Garden.

Much of Ventnor Botanic Garden is planted with plants geographically correct to Mediterranean climate.

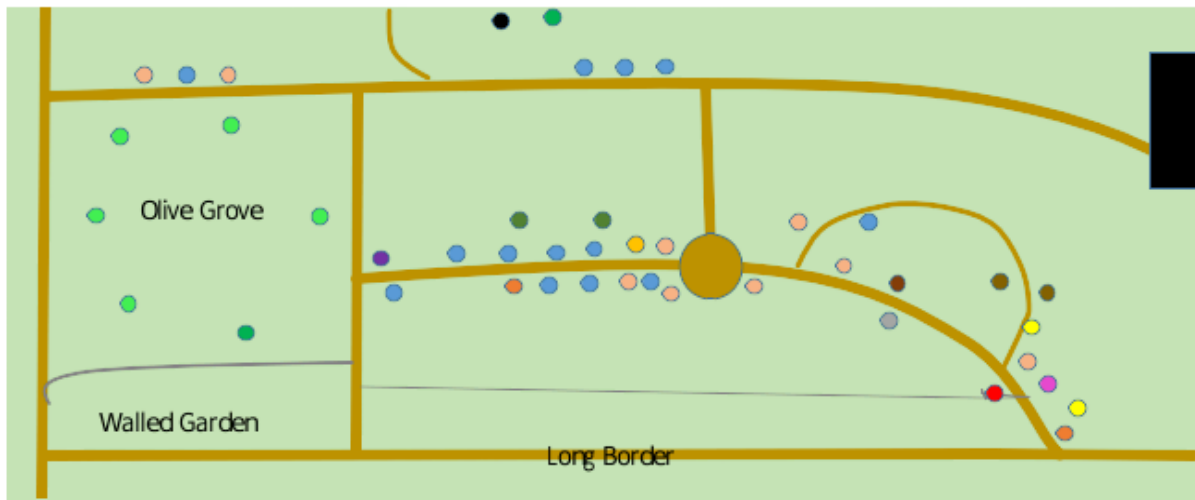
The Mediterranean garden and olive grove is good place to study aspects such as;

- characteristics of these plants
- contrast with tropical (tropical house) and or desert plants(arid garden) and conditions
- adaptations to the climate

The soil is chalky and poor.

It is planted to have a 'natural' landscape – as occurs in nature in the wild of the Mediterranean. There are dry gullies and rock strewn ground typifying many parts of the Med. Other areas are more densely planted with aromatic herbs and evergreen shrubs of the 'Macchie' (Maquis, Macchia, Chapperal) - name given to the vegetation of these areas.

Mediterranean Plants



Observe

Types of plants / leaves etc. How they cope with long hot, dry summers (conserve water) and short cool wet winters. The conditions can be stressful and plants must be hardy and drought resistant.

Short dense scrubby vegetation – drought resistant

Leaves

- thick waxy to avoid dehydration e.g. Euphorbias
- fragrant with oils e.g. olive, rosemary, lavender
- small, silvery or light coloured e.g. olive, rosemary, lavender, broom, teucrium, cistus
- sometimes hairy leaves to deflect sun e.g.

some plants can change the position of leaves to avoid exposing whole surfaces to the sun.

Trees

- Evergreens e.g. olives, cork oaks, holm oak

Use of the senses

Smells – aromatic plants e.g. rosemary, lavender, pineapple broom, euphorbia honey spurge

Feel – the leaves

Notes

Olive grove – under planted with typical plants e.g. quaking grass,



Mayweed



Cistus



Euphorbia

Cork oaks –

Look and feel the bark

but please do not take

away the small pieces.



Could also study these types of plants in:

Australian Garden:-



Eucalyptus trees



Grevillea



Leptospermum



Callistemon (bottle brush plant)

Herb Garden:



sage



thyme



lavender



rosemary