

DISCOVER *Touring*

CARAVAN, MOTORHOME & CAMPING INSPIRATION

ISSUE 17: AUGUST 2019 £1.99

LIVE!

Fit for a Queen Explore beautiful Isle of Wight *'Heir' B&B* Castles with Campsites

REVIEW:

**V-LINE COMPACT
LEISURE VEHICLE**



AUTO-TRAIL



NEW FRONTIER HB



The Frontier range continues to develop, as Auto-Trail introduces two new high bed (HB) models into the 2019 season - the Delaware HB starting from £73,444 and the Comanche HB starting from £83,892. By incorporating an elevated sleeping compartment, both models feature a substantial 1.15m tall rear garage, which is large enough to easily fit a standard sized motorbike.

All Frontier models will also feature a new radiant, fully integrated ALDE hydronic heating system and for added value, the popular Media Pack will now be fitted as standard for 2019. This means you will also receive an integrated 18.5" Avtex drop down widescreen TV/DVD player incorporating digital and satellite tuners, colour touch screen radio/CD player, colour reversing camera - integrated into colour touch screen display, steering wheel controls and an omnidirectional TV aerial - all worth £1,149.

TOGETHER WE'RE GOING PLACES

From only
£73,444* OTR



Delaware 'HB'



Comanche 'HB'

Image shows leather cost option



MOTORHOMES
ARE OUR
DNA

WWW.AUTO-TRAIL.CO.UK

*Prices correct at the time of going to print and could be subject to change.



Welcome

There's something of a heritage theme running throughout this summer issue, as more and more people continue to enjoy history-themed travel and, in particular, visiting our beautiful stately homes and castles open to the public.

If that includes you, do have a browse over our feature on stately homes and castles across that British Isles that don't just have a campsite within a few miles, they actually have somewhere to pitch up within the grounds – and with an easy walk or cycle ride from the campsite to visit the property.

We take that a stage further with our feature on the Isle of Wight. Just three miles off the southern coast of England, the island is very quick and easy to get to and yet, because it requires a short ferry ride across The Solent, feels as if you're really going 'abroad'.

We love the Isle of Wight – as did Queen Victoria and Prince Albert nearly 200 years ago. We think you will, too, so we celebrate their love of the island with a feature following the recently developed Victoria's Island Trail.

We also review two beautifully made tents, from specialists Isabella, that hark back to the traditions of camping. They really are worth a look, especially if you're in need of something to fit a large family into for an extended summer holiday.

Taking nothing away from this issue, we've got some fabulous features lined up in forthcoming issues for the remainder of the year, so to ensure you receive them free of charge, don't forget to sign up on the Discover Touring Live! website at www.discovertouringlive.co.uk/subscribe

Caroline Mills

Editor

Twitter: @CarolineMills99

Contents

TOURING UK AND OVERSEAS

Live! and on Tour

Place in Focus: Isle of Wight

Heir B abd B!: Castles with campsites

REVIEW

Auto-Trail VLINE 634SE

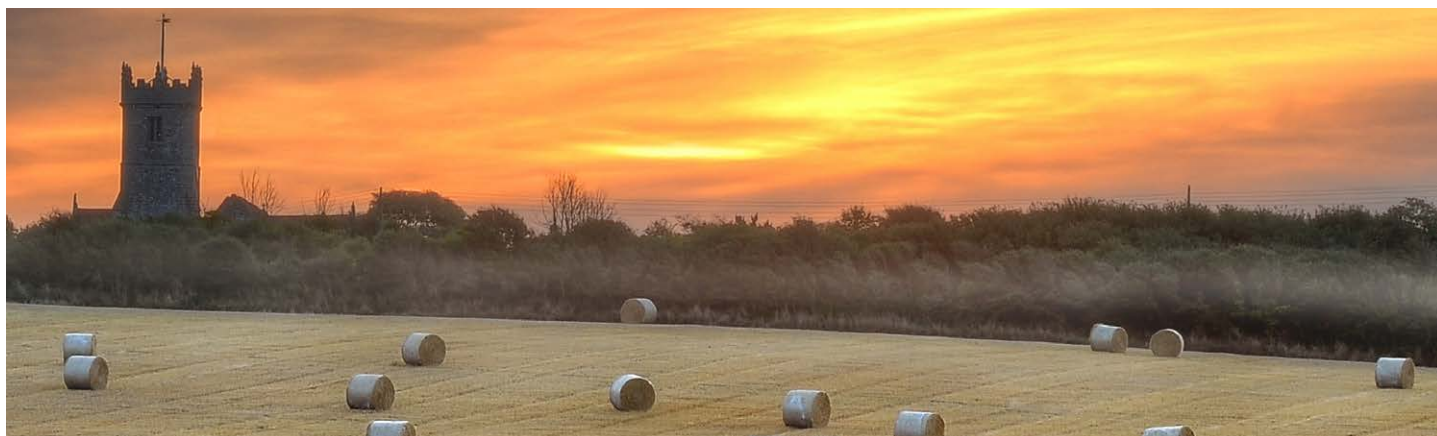
Isabella Tent

PRACTICAL

Advance to Go:

**Caravan & motorhome
pre-journey checklist**

Cover image and contents image
© www.visitisleofwight.co.uk



Editorial:

Editor: Caroline Mills

Designer: Barbara Prada

Sales:

Touring Media Services

sales@discovertouringlive.co.uk

Published under license by
Touring Media Services

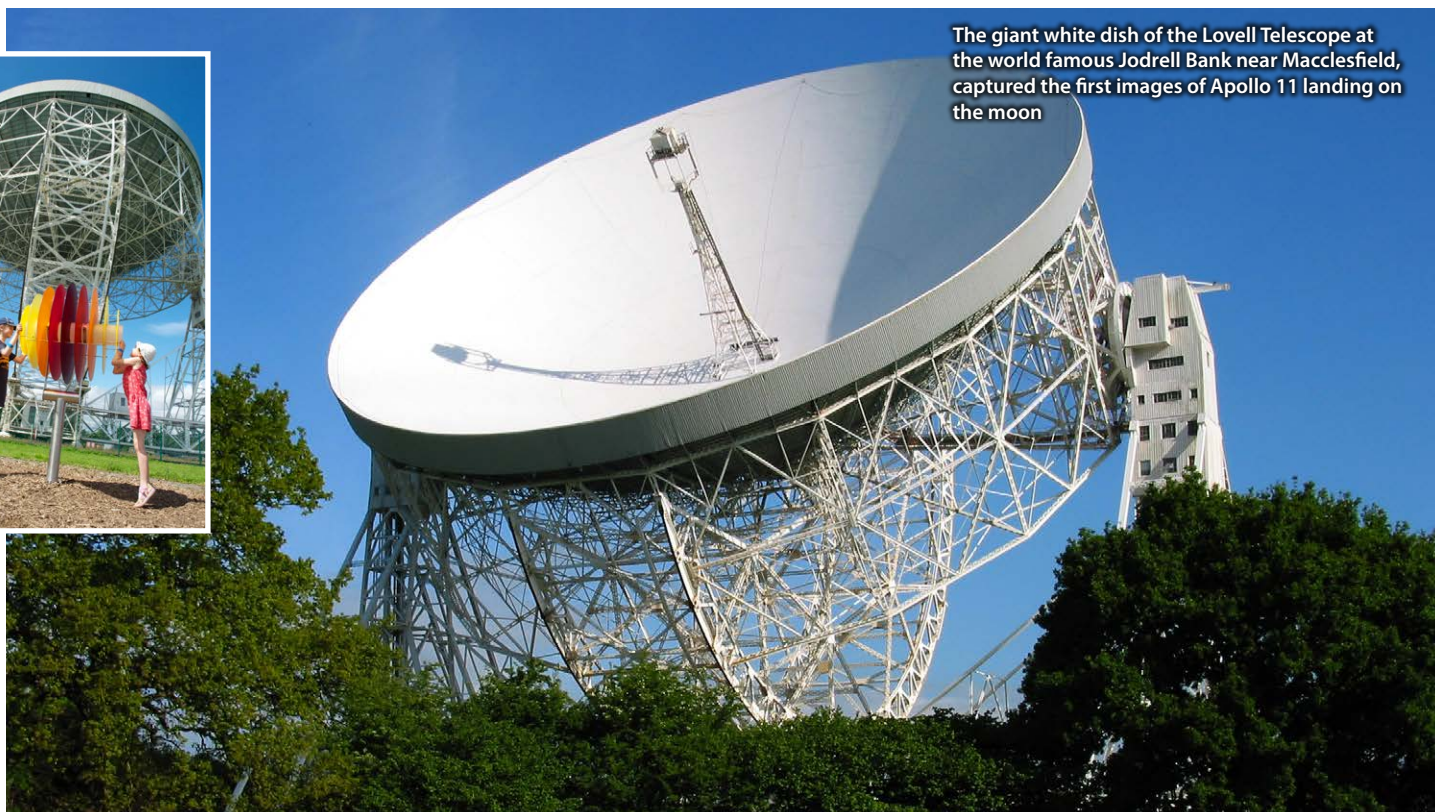
About us: *Discover Touring Live!* is published under license by Touring Media Services. All rights in the material belong to Touring Media Services and may not be reproduced, whether in whole or in part, without their prior written consent.

The publisher makes every effort to ensure the magazine's contents are correct. All material published in *Discover Touring Live!* is copyright and unauthorised reproduction is forbidden. The editors and publishers of this publication give no warranties, guarantees or assurances and make no representations regarding any goods or services advertised in this edition.



LIVE! and on tour

Discover Touring Live! keeps you up to date with news to make your travels even better...



The giant white dish of the Lovell Telescope at the world famous Jodrell Bank near Macclesfield, captured the first images of Apollo 11 landing on the moon

Britain is awarded a new UNESCO World Heritage Site

July 20th 2019 marked the 50th anniversary of the Lunar Landings and Cheshire's Jodrell Bank, which played a part, has just been awarded UNESCO World Heritage Site status.

The giant white dish of the Lovell Telescope at the world famous scientific site near Macclesfield, captured the first images of Apollo 11 landing on the moon. Visitors to Cheshire can explore Jodrell Bank as part of a newly launched campaign, Cheshire: Where Science Meets Nature, a celebration of arts and culture themed on the county's rich scientific and natural assets.

Other moon-themed events in the programme include Space Odyssey, a free exhibition at Warrington Museum & Art Gallery about the town's important role in all Europe's major space missions, with hardware including part of the Hubble Space Telescope on display. In October, Luke Jerram's 'Museum of the Moon' will be the centrepiece of the Warrington Contemporary Arts Festival.

Campers can stay at Capesthorpe Hall Caravan Park (see our Heir B&B feature on page ?), which is just three miles from Jodrell Bank.

Five can go camping in a Dreamer

The French-manufactured Rapido Group, which includes up-market Rapido and Itineo low-profile and A-Class motorhomes and the Dreamer brand of compact leisure vehicles has launched its new range for 2020.

We've always liked the Dreamer compact leisure vehicles, which, for 2020, includes five models in the FUN style and seven models in the SELECT range, including several new



The Dreamer collection of compact leisure vehicles includes 12 models for the 2020 season of between two and five berths



NEW TRACKER EB

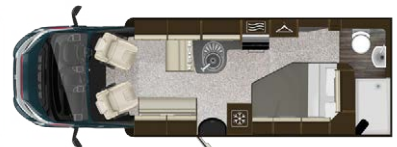


The 2019 Tracker EB, built on the Fiat Ducato heavy chassis starts from just £61,597, and features the popular French bed layout, allowing for space and fluidity throughout the entire motorhome. The washroom at the rear provides generous space and privacy, incorporating a large separate walk-in shower, swivel toilet and basin unit. The spacious front lounge area can also be made up into a large double bed and with the addition of a hi-line and half dinette (cost options), you will have a functional family motorhome that has 4 seatbelts and can berth up to 6.

The EB also includes an upgraded 6kw gas / electric combi boiler, a new high-performance Thetford cooker and alloy wheels fitted as standard.

TOGETHER WE'RE GOING PLACES

From only
£61,597* OTR



£ Half dinette



MOTORHOMES
ARE OUR
DNA

WWW.AUTO-TRAIL.CO.UK

*Prices correct at the time of going to print and could be subject to change.

IN BRIEF



■ The beautiful Henlow Bridge Lakes in Bedfordshire is offering five night's camping from Sunday to Friday for two adults and up to four children with

one vehicle and hook-up for £130. There are masses of free activities to keep little ones occupied, including the new, fully supervised games room, tractor trailer rides, forest school and scavenger hunts, all within the scenic countryside setting.

■ Marquis Leisure, the UK's largest dealer network, has appointed Camper NI as the sole distributor of the Benimar range of motorhomes in Northern Ireland. Customers can choose from a selection of Benimar Tessoro, Mileo, Primero and Benivan products. Located half a mile off the A1 Belfast to Newry road, Camper NI also boast an extensive modern workshop for servicing.



SIT BACK
& ENJOY
THE RIDE

When it comes to motorhome insurance,
Adrian Flux have got it covered.

Policy benefits can include: Agreed value,
foreign travel cover*, awnings and camping
equipment cover and much more.

Call us today for a free personalised quote
0800 085 5000 or visit **adrianflux.co.uk**

ADRIAN FLUX

Authorised and regulated
by the Financial Conduct Authority

*(EU Countries included, additional charges applied to Countries outside of EU)

layouts. But what particularly caught our eye is the Camper Five.

Once again, as with the Family Van launched a few years ago, here, Dreamer has managed to incorporate space for an entire family within the confines of a standard panel van.

There are five belted seats and five berths, including twin bunks and a kids' living room (which turns into an additional bed) at the rear.

Adults get the front all to themselves once the children are in bed, with the relaxing front dinette and captain's chairs, plus a pull-down double bed.

Cars of the future exhibition at the British Motor Museum

A new, topical exhibition exploring the future of the car entitled The Car. The Future. Me. is now open and will run until July 2020.

The exhibition, based at the British Motor Museum in Warwickshire, initially looks back at the inventors of the first cars – some of which were powered by electricity – and their visions for the future.

Visitors will be able to discover what designers in the 20th century thought cars would look like in the 21st century and whether their predictions have come true.

The exhibition then explores the latest car technology, looking at how electric cars work and if they are the best solution for today's roads and travel. Visitors will also discover the world of autonomous vehicles, how much technology is in our cars today and how connected, shared transport systems might be closer to reality than we think.

Finally the exhibition looks ahead to what the future could hold, bringing together visions of designers, engineers and the general public. Visitors also get a chance to use their imagination and design what they see as the car of the future.

Fir Tree Campsite, which sits within gorgeous rolling Warwickshire countryside, is just seven miles from the museum.

Fun in the Sun

Pack up your outdoor gear, stow away your walking boots, clip your bikes on the cycle rack and enjoy a weekend of adventure



With the V-Line 634 SE, there's no need to pack up your troubles in your old kitbag. You can leave them all behind, as you drive off in this compact leisure vehicle packed with the kit required for an exciting, adventurous weekend.

Exterior

One for the style conscious, the five-model range of V-Line Fiat-based van conversions has always looked classy and the new 634 SE model is no different: the silver metallic paintwork with colour coded bumper, black front grille, matching black wind-out awning and 16" alloy wheels combine to make a really polished performance.

If you're concerned about it looking too much like a panel van (and, once you've seen it, you shouldn't), add the optional Sports Pack, which includes the on-trend GRP back





panel with a top-hinged gas strut rear door in place of the double rear doors (though you won't be able to attach the optional bike rack to the rear). The Sports Pack also gives you a gas BBQ point and an external shower point for hosing down muddy boots.\

Living & Sleeping

The main living area is at the rear – two long parallel sofas in soothing dogtooth beige upholstery with colour-coordinated scatter cushions in a teal green geometric design. The sofas are supremely comfortable for lounging after a long day in the saddle, or when sitting up for dinner at the freestanding table; open the rear doors for dinner with a view. If you opt for the Sports Pack, you'll lose the option to open the rear doors but the space becomes a really cosy wraparound U-shaped lounge.

When it's time to rest your head, the sofas turn into two single beds or a huge transverse double bed.



Kitchen

The 634 SE was designed for cooks! It has the largest kitchen area of the five V-Line models, so if food plays a major part in your active life, this is the model for you. There's a tall slimline fridge/freezer opposite the sliding side entrance door, while the galley kitchen sits on the nearside, by the door.

Here you've got a three-burner hob, an oven, grill and 800W microwave to cook up fabulous feasts and a hearty breakfast ready to fuel your day. There's an excellent preparation space between the hob and sink, plus storage for pots, pans, crocks and cutlery.

Washroom

The on-board washroom means you don't have to rely on campsite amenities for that freshen up after a day of adventure. It's compact but it does have a shower, foldaway basin and a cassette toilet. There's a large mirror and room enough for shower gel and shampoo.

Storage

You'll find space beneath the lounge seating for bulky sports equipment, or for storing bedding during the day (which could also be stored in the adjacent wardrobe). Overhead airline-style lockers provide space for clothing that doesn't require a hanging rail, with additional lockers if you opt for the Sports Pack owing to the alternative rear panel. The Sports Pack also allows storage space at the rear of the 'van, accessed externally.

Final Say...

The 634 SE offers a wonderful home-from-home that is compact enough externally to head with confidence to those remote places along country roads but sufficiently spacious inside to be comfortable.

The vehicle has Grade Three insulation and a gas/electric heater so it can be used all

Technical Specifications

Base vehicle chassis: Fiat Ducato Multijet II 2.0 Euro 6 115bhp (automatic gearbox as a cost option)

Mass in Running Order (MIRO):..... 3.010kg

Gross Vehicle Weight: 3,500kg

Max Payload:..... 490kg

Exterior Length:..... 6.36m

Body width 2.27m

Height 2.68m

Berths:..... 2

Designated travel seats: 2

Costfrom £51,877 otr
(Sport Pack £1,795 / Media Pack £1,149)



year round and we'd recommend adding the optional 12V water tank heater for peace of mind in really cold temperatures. We like the removable bound-edged carpets in both the cab and living areas, allowing the option of hardwearing, easy-wipe flooring for those coming in from outdoor activities.

If you prefer to be indoors more than out, add the Media Pack, which includes a DAB radio with USB/iPod connection, integrated MP3, TV/DVD player incorporating digital/satellite tuners and Bluetooth among other handy extras.

Discover More:

Auto-Trail

www.auto-trail.co.uk

ROLLER TEAM



**From only
£39,995*
on the road**



NEW FOR 2019 **THE TOLENO RANGE**

A brand NEW compact leisure vehicle range offering both a luxurious rear lounge and fixed rear bed layout

You will no doubt become the envy on the road with a NEW compact leisure vehicle from the never seen before Toleno range. Both models are built on the 5.99m Fiat Ducato and showcase a NEW modern upholstery scheme, including a customised cab seat logo. The Toleno L, a rear lounge two berth model, offers two large 6'3" single beds or one grand double at the rear. The Toleno R, offers two rear double bunk beds and is capable of sleeping up to four, with the bottom bed having the ability to be hinged up to create important storage space when travelling.



Find your nearest stockist and more online,
www.rollerteammotorhomes.co.uk

*Prices correct at the time of going to print and could be subject to change.

A Lifetime of Camping

Enjoy family quality time with the Moment 300 North tent



The Moment 300 North with additional Annexe 250 at the side, Moment 300 North Extra Space added to the rear and Eclipse front sun canopy for additional shade.

Close your eyes and think back to the days of childhood camping. What did the tent look like? A classic triangular shape with a ridge pole? Or, for larger family tents, the look when you draw a house – with an angled roof, front door and windows?

That's exactly what you'll find with Isabella's retro-style North Nature collection. Only, while the designs may be inspired by the age-old traditions of camping, modern technology plays a part in the materials and manufacture. We spent time with both tents; see how we got on here.

Exterior

"The Moment 300 North is a modern interpretation of the classic tent. The asymmetric design oozes nostalgia." So says the brochure for Isabella tents and we wouldn't disagree. There is something very comforting about the retro appearance of both the 300 and the 180 (the smaller two-person sister of the family-sized 300), whether that's the simplistic geometric shapes or simply that it takes you back to carefree days of childhood camping. Colours are deliberately neutral, soothing and complementary – deep-sea blue and pale

sand panels with a Siena-brown piping.

What is quite obvious as soon as you begin to unpack either tent is the quality of the materials and the quality of the manufacture. Stitched seams are immaculate, everything lines up exactly, zips are robust, as are the tie down hooks and guy ropes, attention to detail is everywhere.

The materials used are the very best – Isacryl is used for the main 'canvas' on the 300 – the dyed, textured weave is about as fade-resistant as you can get, meaning the tent will still look good in years to come. It's breathable yet fully impregnated to prevent ►

The Moment 300 North requires multiple adults or older children to help pitch the tent, here prior to the poles being extended to full height.



Attention to detail is apparent everywhere, including the leather-effect eyes ready to receive the guy lines.

water ingress. The acrylic-coated polyester roof is top lacquered and, inside, there's an unobtrusive patterned design. You'll find beautifully crafted wooden guy rope tensioners and leather-effect loops to match the brown piping; it's all very stylish.

The front of the 300 has two half panels, each with a large, panoramic acrylic window; both panels can be rolled up independently, held in place by the set of variable-length door and window pop-stud ribbons (we'd recommend purchasing extras). Alternatively, the panels can remain zipped up with access via a domestic-sized, arched front door. The roof canopy protrudes by a matter of inches, but it is possible to add the Eclipse Sun Canopy to create additional shade and undercover space.

At the sides are two removable panels where Annex 250 extensions can be attached – adding space for four more sleeping berths. Otherwise each side panel has a large acrylic, zip-opening window with sewn-in mosquito nets.

The entire rear panel can be removed to attach the colour-matching Moment 300 North Extra Space, otherwise, a chunky central zip allows for air to circulate through the tent from front to rear.

Pitch up

The 300 is available with two frame versions: the Zinox MegaFrame tubular steel frame is recommended for tents that are pitched all season and in all weathers. We pitched the CarbonX™ Frame (also used with the 180) that is some 30kg+ lighter and more suited to campers opting for an annual holiday. The extendable poles are corrosion resistant and come with IsaFix™ locking clamps to hold the pole into position; they're easy to clip/unclip with one hand while holding the pole in the other.

We found all the poles fitted together well with no overly tight or loose fittings. While the 180 took a matter of minutes for two people to put together, the 300 definitely requires a minimum of three, ideally four adults/strong teenagers – don't expect a six year-old to give you a hand holding this tent in place or pulling the canvas over the frame.

The instructions that come with the tent are in diagram format only – irrelevant once you've put it together a few times but it would be helpful for them to be a little more

Technical Specifications

Moment 300 North

Materials: Breathable Isacryl 295g/m2

Dimensions: 510cm x 300cm

Total weight, including frame:

Carbox X – 53.3kg, Zinox MegaFrame – 87.6kg

Sleeps: 6

Optional extras: Annex 250, Moment 300

North Extra Space, Eclipse front sun canopy, Cosy Corner II, Isabella carpet

Cost: £2,371

step-by-step for the novice.

As per the instructions, the canopy needs to be put in place over the frame before extending the vertical poles. While we found the extendable poles and clips to be easy to use, we recommend marking up approximately where the horizontal and vertical poles need to be positioned for the overall finished length (accounting for uneven ground) as there are no dimensions on the instructions. A couple of small spirit levels would be useful to have with you to avoid a wonky tent and putting strain on pressure points – we probably didn't get the canvas quite taut enough.

We found pitching time, from opening the brand-new box, laying everything out and erecting the tent to take 1½ hours with three of us and a fair bit of faffing about. We believe that, now we know how it goes together, we could get that down to 30 to 45 minutes. That said, we wouldn't want to attempt to pitch the 300 with a strong wind – this is a large expanse of canvas to hold in place.

Living & Sleeping

The 300 is a joy to spend time in, thanks to its spaciousness. And, owing to all the ►

The Moment 180 North is the smaller, traditional ridge-pole tent for two people. It is quick and easy to pitch in just a few minutes.





The Moment 300 North is large enough for families to enjoy an extensive camping holiday without sitting on top of one another.

add-ons that are available and simple to attach, even the largest family or group of friends can camp together without feeling you're constantly on top of one another, even when you're driven indoors by a rainy day. But, with the numerous options for opening up the tent, the tent feels cool even in the hottest weather.

The 300 comes with two internal, white cotton bedroom cabins, each with its own waterproof groundsheet, with additional cabins available to purchase. The cabins peg into the ground at the four corners and hook onto the roof poles by elastic straps with quick and easy clips. A mesh panel at the rear allows for airflow while each has a double door of mosquito mesh and cotton, which can be tied back with door ties.

We erected these facing each other at the rear of the tent, leaving the front area of the tent (and side windows for ventilation) free for living space, but the cabins are flexible to position where you prefer – both on one side of the tent – or not use at all.

Each cabin is large enough to accommodate a double-sized airbed or a single bed and a small stool or table for a mug of tea, books and a lamp or torch. We utilised Isabella's single folding bed, which takes seconds to put in place (quicker than an airbed) and, with a duvet beneath as a mattress, was supremely comfortable.

The folding Balder Stool, part of Isabella's coordinated North collection, made a useful side table, particularly with the removable rigid table-top. The tent also comes with a lightweight curtain set to aid privacy and we could have added a full-tent-sized, waterproof carpet though we preferred the feeling of grass beneath our feet for an authentic camping experience.

Isabella's extensive coordinated collection of North accessories means you can dine in comfort. We used the space-saving folding table to dine at and Balder chairs, which are ideal for sitting at the table to eat but don't recline should you be after something for lounging in.

Storage

The 300 offers oodles of space in which to store equipment while the Annex 250 is perfect for adding extra storage space for bulky items such as bikes or sports equipment. There are no storage accessories included as standard with the 300 though Isabella offers a range of folding camping cupboards and wardrobes together with useful hanging organisers for all those bits and pieces. Both the 300 and 180 come in their own sturdy carry bag.

Final Say...

We definitely recommend opting for the



The bedroom cabins are large enough to fit a double-sized airbed although we used them as single bedrooms allowing space for Isabella's bedside Balder Stool and table top.

CarbonX frame unless you're planning on using the 300 as a permanent, all-season tent and, with the pitching time, it's best-suited for extended holidays rather than a quick weekend getaway.

For couples, the 180 is a lot of fun for those that love the back-to-basics retro style and appreciate quality while the Moment 300 North is a fabulous space to enjoy a whole-family fortnight in. It's undeniably, not the lightest – or the cheapest – tent you can buy but its quality of materials and manufacture means that, looked after well, it's likely to last a lifetime. ■

Discover More:

Isabella
www.isabella.net

Pack up, Park up & Pitch up

Save up
to 50%*
on touring and
camping breaks

Book now and secure your Haven holiday with a low deposit of just £25[^].
Let the countdown begin.



To find out more visit [haventouring.com](https://www.haventouring.com) or call 0333 202 1502

Terms and conditions: *Up to 50% discount varies by park, date, pitch, duration and excludes school and bank holiday dates where a saving of up to 25% applies instead (on a minimum of three nights). [^]£25 deposit payable at time of booking. Any final remaining balances for all touring and camping holidays will be due 10 weeks prior to arrival. These offers cannot be combined with monthly and seasonal lets. On peak dates, a minimum duration may apply at selected parks – please check at time of booking. All offers are subject to availability, apply to new bookings only and can't be used with any other voucher, discount or offer (unless otherwise stated), and may be reduced or withdrawn without notice. Pictures shown are for representation purposes only. Facilities, activities and entertainment vary by park and date and may be subject to a moderate extra charge. For full terms and conditions, including call charges, visit www.haven.com/terms. Haven Holidays is a trading name of Bourne Leisure Limited, registered in England and Wales, no 04011660. Registered office 1 Park Lane, Hemel Hempstead, Hertfordshire HP2 4YL.

HAV12411_26989

The Isle of Wight, loved by Queen Victoria, continues to be loved by all

Two hundred years ago, in 1819, a young Princess Victoria was born. She went on to become the longest reigning British monarch (until Queen Elizabeth II superseded in 2015) and gave her name to an entire period of history. Three months after her birth, her future husband Prince Albert was also born.

Fast-forward twenty years and, as husband and wife, the royal couple visited the Isle of Wight regularly as their favourite holiday destination, staying for long periods at a

time and returning to the island over many years. The Queen ruled her worldwide empire from her seaside palace, Osborne House, entertaining foreign royalty and dignitaries. Victoria and Albert made the island, just three miles from the coast of southern England, a fashionable place to be. So it remains as popular today.

It's understandable why, with its many sandy beaches and bays, outstanding coastal and inland countryside (much of the island is designated as an Area of

Outstanding Natural Beauty), pretty villages and attractive towns plus miles of footpaths and quiet country lanes for cycling. And that's not forgetting major annual events and festivals along with top quality visitor attractions.

Now you can discover the island through the eyes of a monarch, with the recently developed Victoria's Island Heritage Trail. With thirteen easily accessible locations, you can walk in the footsteps of a queen.

Fit for *a Queen*



Osborne, the Italianate palace designed by Prince Albert and the family seaside home of Queen Victoria, Prince Albert and their nine children.
(©www.visitisleofwight.co.uk)



INDUSTRY LEADING WARRANTY COVER

ON ALL 2019 MODELS



**RECEIVE INDUSTRY LEADING WARRANTY COVER
WITH EVERY 2019 AUTO-TRAIL LEISURE VEHICLE**

- ✓ Unrivalled industry cover
- ✓ Full cover standard with every Auto-Trail model
- ✓ Free transfers for life of warranty
- ✓ Fully manufacturer backed

One of the many benefits of purchasing a 2019 Auto-Trail leisure vehicle, is the high quality warranty cover you will receive as standard with every vehicle. All 2019 models have a 5 year habitation and 2 year Fiat warranty, and for peace of mind, a 10 year body construction integrity warranty is included to all 2019 models.

**Terms and conditions apply - contact your
Auto-Trail dealer for further warranty information.**

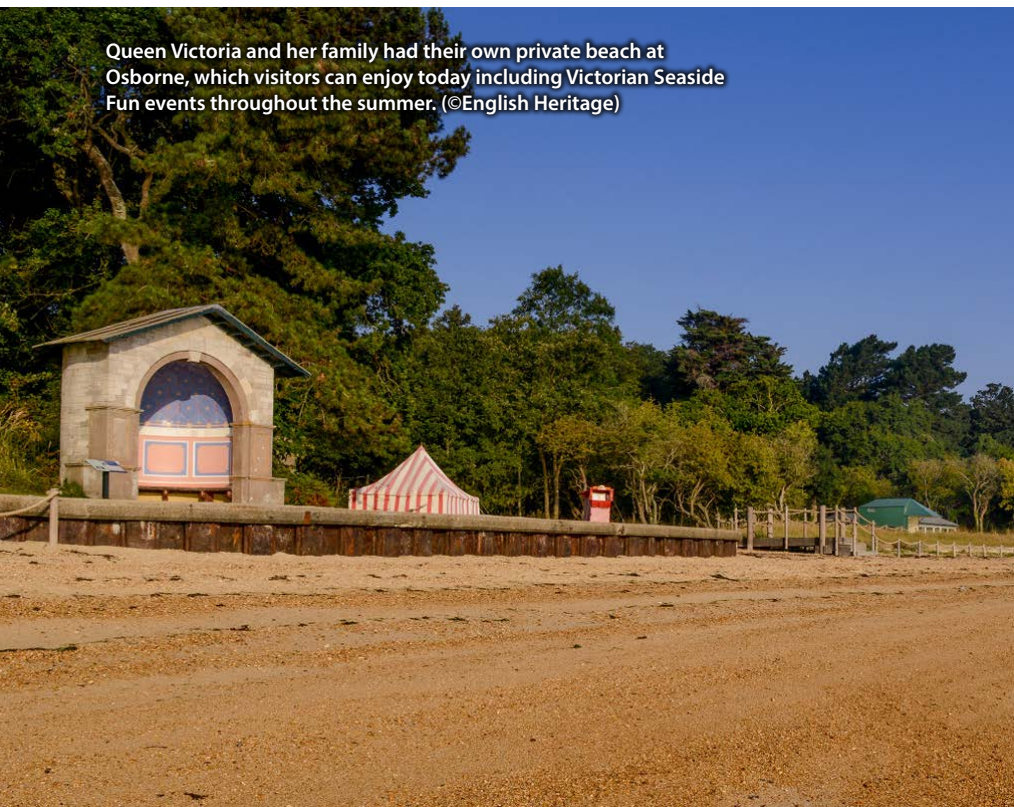


TOGETHER WE'RE GOING PLACES

WWW.AUTO-TRAIL.CO.UK



Queen Victoria and her family had their own private beach at Osborne, which visitors can enjoy today including Victorian Seaside Fun events throughout the summer. (©English Heritage)



Osborne, East Cowes

This is the royal family home of Queen Victoria, Prince Albert and their nine children. Designed by Prince Albert, it reflects the couple's passions, tastes and style. Ornate furnishings and artefacts from The Royal Collection fill rooms and corridors where Victoria entertained heads of state and ruled the vast British Empire. "It is impossible to imagine a prettier spot," said Queen Victoria of the much-loved Osborne.

Summer visitors to the English Heritage property can join in the Victorian Seaside Fun between 29th July and 1st September – and discover how the royal couple celebrated their birthdays each year at Osborne.

St Mildred's Church, Whippingham

Just a short ride from Osborne, this church was redesigned by Prince Albert and rebuilt in a style to suit the Victorian royals. The family worshipped at St Mildred's

and Queen Victoria's youngest daughter Princess Beatrice was married here; it is also Beatrice's final resting place. There's a permanent exhibition of royal memorabilia.



St Mildred's Church
©www.visitisleofwight.co.uk

Carisbrooke Castle

King Charles I was imprisoned here during the English Civil War but, latterly,



Carisbrooke Castle
(©English Heritage)

Princess Beatrice used part of Carisbrooke as a residence from 1912. The Princess made many changes, including creating a museum of local history and commissioning an altar painting for the chapel to commemorate the death of her son at Ypres in 1914. English Heritage now manages the property, which is open to visitors throughout the year.

The Needles

This chain of rocks spreading out into The Solent is one of the island's most recognised landmarks. The Marconi Monument here ▶



The Needles is one of the Isle of Wight's most recognisable landmarks.
(©VisitBritain/Jason Hawkes)

Birthday celebrations at Osborne House



(Royal Collection Trust
©Her Majesty Queen
Elizabeth II 2019)

A statue of Prince Albert as a Greek warrior and a painting of bathing maidens are just a few of the extravagant gifts exchanged between Queen Victoria and her husband on display at Osborne on the Isle of Wight as English Heritage celebrates the 200th anniversary of the births of the royal couple with a new display and trail at their seaside retreat.

Celebration: Victoria & Albert's Birthdays at Osborne explores how Queen Victoria and Prince Albert spent their birthdays at the family home every year. Celebrations were very much a family affair complete with performances of poetry and music by the royal children, celebratory dinners, and group photographs – and, of course, there were gifts. Victoria and Albert made grand gestures to each other – commissioning paintings, sculptures, and jewellery for the celebrations. These gifts were presented each year on an elaborately decorated birthday table, set out in a room decorated with flowers. Many of these gifts are still part of The Royal Collection housed at Osborne and will be the focus of the new trail and display at the couple's family home. The display will be presented in the household dining room, which has been returned to its 1897 colour scheme of green and gold.

Michael Hunter, English Heritage Curator at Osborne, said: "Until the death of Prince Albert, Victoria always spent her birthdays at Osborne and revealing these occasions gives a real glimpse into the private lives of the royal family and how they celebrated."

The display and trail continues throughout 2019.

commemorates the spot where Guglielmo Marconi sent the very first wireless transmission. Queen Victoria was said to be delighted when Marconi, summoned to Osborne House, went on to establish a radio communication between Queen Victoria at Osborne and her son, the Prince of Wales (later Edward VII) who was on board the Royal Yacht 'Osborne'.

Blackgang Chine

Queen Victoria visited Blackgang Chine in August 1853 to see the skeleton of a whale that had washed up near the Needles – it was Blackgang Chine's very first attraction and is still on view today.



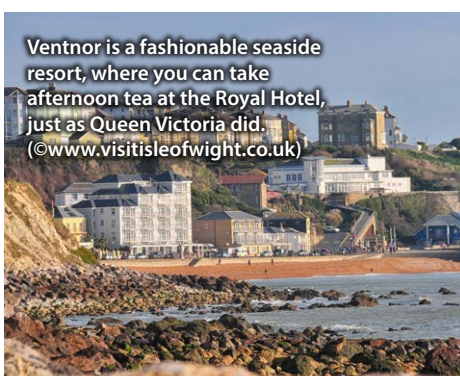
Fireworks at Blackgang Chine, which has been a popular tourist attraction since Queen Victoria visited.
(©www.visitisleofwight.co.uk)

Shanklin Chine

First open to the public in 1817, Princess Victoria visited Shanklin Chine aged 14 in 1833 with her mother. Entry was via Fisherman's Cottage, now a popular dog- and child-friendly pub. Queen Victoria continued to visit the beautiful tree-lined gorge regularly; it remains one of the most beautiful and historic attractions on the island.

Ventnor

In Victorian times, Ventnor became a fashionable holiday resort, partly because



Ventnor is a fashionable seaside resort, where you can take afternoon tea at the Royal Hotel, just as Queen Victoria did.
(©www.visitisleofwight.co.uk)

Ventnor Botanic Gardens. You can even camp among the flowers! (©www.visitisleofwight.co.uk)



Queen Victoria's surgeon recommended the health-giving properties of the town's south-coast climate. The Royal Hotel, so named after Queen Victoria visited and endorsed it for afternoon tea, remains the place to enjoy such a spread, particularly in the exotic south-facing gardens or the Geranium Terrace. Why not indulge in the Royal Afternoon Tea – served with champagne for a real treat?

Egypt Point

The coastal viewpoint between Cowes and Gurnard was one of Queen Victoria's favourite places. It was from here that she enjoyed the magnificent sunsets and a panoramic view of the Solent, still loved by visitors and residents alike today.



Egypt Point
(©www.visitisleofwight.co.uk)

Farringford, Freshwater

The Isle of Wight retreat of Poet Laureate Alfred Lord Tennyson and where he wrote many of his best-loved works. Farringford has recently been restored and is now open to the public. Tennyson was a regular guest at Osborne. Reciprocally, Prince Albert visited Farringford in 1856, leaving with a handpicked bunch of cowslips to take back for the Queen.

Newport Minster

This beautiful town church was rebuilt by Queen Victoria and Prince Albert having felt it initially unsuitable to house the remains of Princess Elizabeth, Charles I's daughter. Prince Albert laid the foundation stone for the new church in 1854 and Queen Victoria commissioned a marble memorial to Princess Elizabeth.

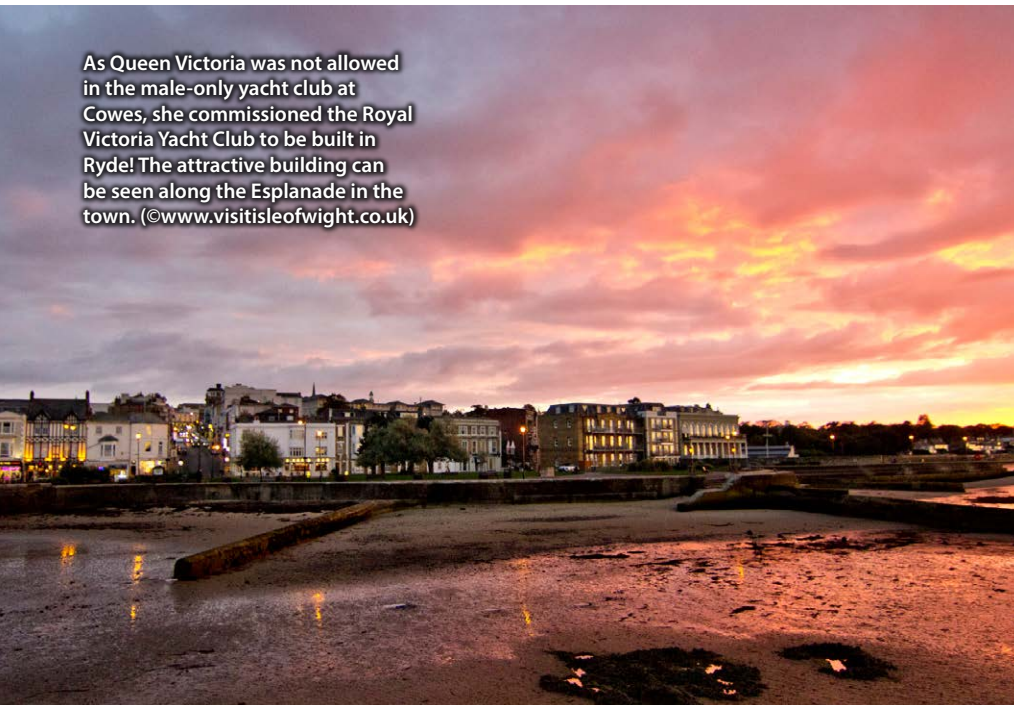


Newport Minster was rebuilt by Queen Victoria and Prince Albert. (©www.visitisleofwight.co.uk)

Ryde

Ryde is the largest town on the Isle of Wight and with its prominent position on the north coast and its passenger ferry links, ▶

As Queen Victoria was not allowed in the male-only yacht club at Cowes, she commissioned the Royal Victoria Yacht Club to be built in Ryde! The attractive building can be seen along the Esplanade in the town. (©www.visitisleofwight.co.uk)



is often referred to as the 'gateway to the island'. There are sandy beaches, boutique shops, museums and galleries aplenty but take time to wander along the esplanade, where you'll see the Prince Consort. The attractive building, once known as the Royal Victoria Yacht Club, was built as a private place for the Queen to attend because the Royal Yacht Squadron in Cowes would not allow female visitors – royal or not!

Northwood House

This Georgian manor house was the venue for Victorian high society balls and parties, many of which were attended by Queen Victoria, Prince Albert and their family. It continues to be a part of the social life of Cowes, with many public events held

throughout the year, including firework parties, Cowes Week parties and The Wight Proms, held in 2019 from 29th August to 1st September. ■

Northwood House, where high society including the royals mingled in the Victoria era, continues to host major events such as the Wight Proms. (©www.visitisleofwight.co.uk)



➔ Discover More:

www.visitisleofwight.co.uk
www.english-heritage.org.uk

Getting there

There's a choice of frequent car ferries from Southampton, Portsmouth and Lymington operated by Wightlink and Red Funnel, which also take touring caravans and motorhomes. If you've just a tent and a rucksack on your back (and a bike), you can also use the Red Jet, FastCat or Hovertravel passenger services from Southampton, Portsmouth and Southsea. Crossing times vary from 10 minutes to an hour. Once on the island, there are 500 miles of public rights of way for walking, while the Isle of Wight is regarded as a fabulous location for cycling. Southern Vectis operate buses throughout the island and you could take an open-top Breezer tour or hop-on, hop-off Island Coaster, which has the capacity to carry bikes.



➔ Discover Where to Stay:

Whitecliff Bay Holiday Park

If you have a campervan, touring caravan or tent, great – this holiday park on the east coast of the island has touring pitches from just £4pppn. If you're without your own accommodation, the choice is yours between traditional-style static caravans and chalets or glamping in the Canvas Village where you can stay in beautifully decorated bell tents, all with mod cons. Or you could go for the Manhattan loft look in one of the impressive TriBeCa caravans or 'Cool Britannia' with the oh-so-comfortable Rockstar caravan. Whichever way you stay, the holiday park has masses of space, modern amenities including restaurant and bar, its own sandy beach and stunning coastal views.

Hillway Road, Bembridge, Isle of Wight, PO35 5PL
 Tel 01442 508850
www.awayresorts.co.uk



'Heir' B&B

Lay your head down at a stately home.
Caroline Mills explores six castles and stately homes with campsites in the grounds



Blenheim Palace and (inset) Bladon Chains Caravan & Motorhome Club Site, which is in the grounds of Blenheim Palace

If you love the history and the architecture of grand palaces, remarkable castles and extraordinary stately homes, where the story of Britain has unfolded over centuries, you'll want to make a point of visiting these six locations. Each one doesn't just have a campsite or caravan park 'nearby' – there's somewhere to make your bed and lie in it on the estate. Eggs, sunny side up, please.

Blenheim Palace, Oxfordshire

A UNESCO World Heritage Site, Blenheim Palace is the seat of the Dukes of Marlborough and the only non-royal country house in England to hold the title of palace. It was built as a gift from Queen Anne to the first Duke of Marlborough for his victory over the French at the Battle of Blenheim in 1704. This is also where Sir Winston Churchill, a descendant of the Duke, was born (unexpectedly) – a permanent exhibition about his life and work is focused around the room in which he was born.

The gardens, the Capability Brown park and wider estate are magnificent – and the Caravan and Motorhome Club's Bladon Chains site is within the estate walls, close to Bladon Church where Churchill is buried. Club members receive 30% discount on entry to Blenheim.

Capesthorpe Hall, Cheshire

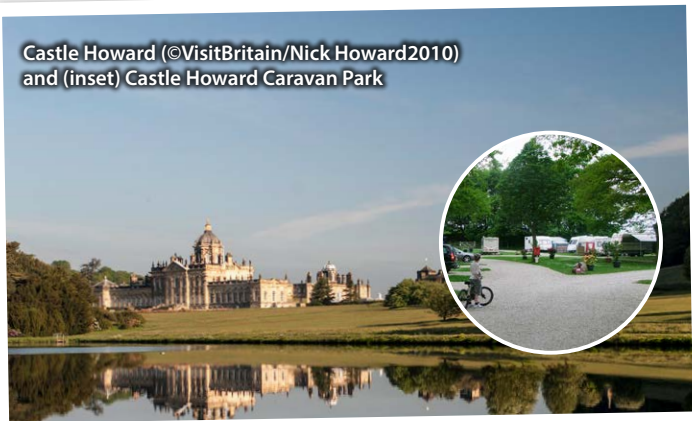
Capesthorpe Hall has been the home of the Bromley-Davenports since 1726. The Jacobean-style Hall has a collection of fine art, marble sculptures, furniture, tapestries and antiques from Europe,



Capesthorpe Hall and (inset) Capesthorpe Caravan Park

America and the Far East. The caravan park has 50 spacious pitches in a picturesque tranquil setting located in the grounds of this magnificent stately home, with idyllic woodland walks and formal lakeside gardens, making it a wonderful place to relax. The gardens, one of Cheshire's Gardens of Distinction, feature colourful herbaceous borders filled with a rich array of perennials. Visitors will also see a curious swallow hole, an ice house and family chapel. Butlers Pantry, overlooking the lake, is available for homemade light refreshments. ►

Castle Howard (©VisitBritain/Nick Howard2010)
and (inset) Castle Howard Caravan Park



Castle Howard, North Yorkshire

Eight generations of the Howard family have resided at Castle Howard, one of the largest and most stately of all houses in the north of England. The 18th century house is set in more than 1,000 acres of scenic, landscaped parkland, which regularly plays host to major public events and festivals, most notably in 2019, BBC Countryfile Live.

There's plenty for families on the estate, from illustrated trails in the house to woodland paths, picnics by the lake and adventure playgrounds including, new this summer, Skelf Island. Lakeside Holiday Park, as its name suggests, overlooks the Great Lake, and is close to the estate village of Coneysthorpe and Castle Howard's courtyard shops and café. It's a one-mile walk or cycle ride to the house entrance from the campsite.

Burton Constable Hall, East Yorkshire

Home to the Constable family for more than 700 years, Burton Constable is one of the most fascinating English country houses to survive. Visit the Hall's many grand rooms crammed with fine and decorative art, furniture and country house paraphernalia, as well as a remarkable eighteenth-century Cabinet of Curiosities full of weird and wonderful objects from around the globe.

Burton Constable brims with fascinating stories of family characters; in 2019 the seasonal exhibition 'Difficult Women' shines the spotlight on the generations of women and their varying impacts

Burton Constable Hall (©Burton Constable Foundation)



on, and contributions to the development of the Constable family and the Hall through their fascinating and sometimes surprising stories.

The Hall is surrounded by 330 acres of stunning historic grade II* listed Capability Brown parkland. Open daily throughout the year you can enjoy beautiful walks with sweeping scenic views, or simply relax and enjoy a picnic whilst admiring its atmosphere of calm and gentle peacefulness. Stroll through the mighty oak trees along the Woodland Walk and take the Lakeside Walk to the stunning Capability Brown Bridge and serpentine lake admiring the

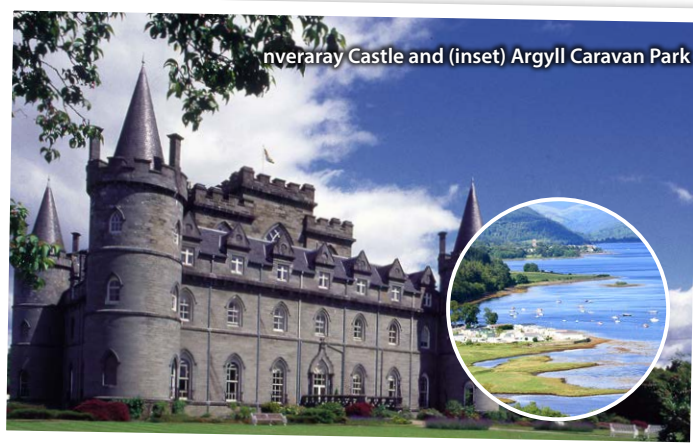
picturesque view back to the Hall. Or have a go at the ancient sport of archery with the Burton Constable Company of Bowmen.

Burton Constable Holiday Park offers pitches for touring caravans, motorhomes and tents in addition to camping pods, lodges and static caravans for hire. The five star, five AA Pennant site is just a short stroll through the Capability Brown parkland to reach the Hall.

Inveraray Castle, Argyll

The ancestral home of the Dukes of Argyll and seat of Clan Campbell, Inveraray Castle is a striking, must-see attraction on the west coast of Scotland. All turrets and towers, the property stands on the shores of Loch Fyne, surrounded by magnificent colourful gardens brimming with daffodils and bluebells in spring, rhododendrons and azaleas in summer, heathers in autumn.

You'll find plenty of enjoyable walks, often with majestic views, in the surrounding hills and traditional sports are also available on the 50,000-acre (yes, 50,000!) estate. The Argyll Caravan Park, with touring pitches and glamping pods, sits on the banks of Loch



Fyne and has beautiful views of the loch. Though still on the Duke of Argyll's estate, it is a little further to walk than the other stately homes with campsites mentioned here, with a two-mile walk or cycle ride; but, along the shores of Loch Fyne, it is some route!

Castle Ward, Northern Ireland

For many, parts of Castle Ward will be recognised as one of the major film locations for the TV sensation Game of Thrones. But that's only the half of it – there is much more to Castle Ward, including the impressive 18th-century mansion (only the farmyard was used as a set). The parkland, on the shores of Strangford Lough, is sublime, with numerous walking trails and there are family activities galore from archery and pirate picnics to summer music concerts in the gardens. Castle Ward is a National Trust property and the organisation also manages Castle Ward Caravan Park, located in a quiet corner of the estate grounds, right on the edge of Strangford Lough. There are 35 pitches for tents, touring caravans and motorhomes. ►

Castle Ward



Go Glamping at Burghley Horse Trials

Camping is not usually available in the grounds of Burghley House so here's a rare opportunity to be able to pitch up on the estate. Indeed, you won't actually need to do the donkey work, for the gorgeous bell tents will be all ready for you.

This is the first time that luxury glamping will be available on the Burghley Estate for the prestigious Land Rover Burghley Horse Trials, which take place this year from 5th to 8th September.

Set within the beautiful Walled Garden, Burleigh Boutique will provide guests with spacious, well lit Belle and Lotus tents. Every tent comes fully equipped with memory foam mattresses, snugly duvets and Egyptian cotton bed sheets. Secure parking, luxury toilets, food and a bar are also supplied.

The Walled Garden is a 15-minute walk to the horse trials and tickets to the event will need to be purchased in addition to the glamping package.

www.burghley.co.uk

burghley-horse.co.uk

burghleyboutique.co.uk



➔ Discover More:

www.blenheimpalace.com

www.capesthorne.com

www.castlehoward.co.uk

burtonconstable.com

burtonconstableholidaypark.co.uk

www.inveraray-castle.com

www.nationaltrust.org.uk/castle-ward

www.caravanclub.co.uk

Other stately homes with campsites to consider:

- Eastnor Castle (eastnorcastle.com), Herefordshire; Deer Park Campsite
- Chatsworth House (www.chatsworth.org), Derbyshire; Chatsworth Park Caravan & Motorhome Club Site
- Scone Palace (scone-palace.co.uk), Perthshire; Scone Camping & Caravanning Club Site
- Blair Castle (blair-castle.co.uk), Perthshire; Blair Castle Caravan Park



DISCOVER *Touring*

CARAVAN, MOTORHOME & CAMPING INSPIRATION

LIVE!

Your free magazine for
Touring inspiration.

